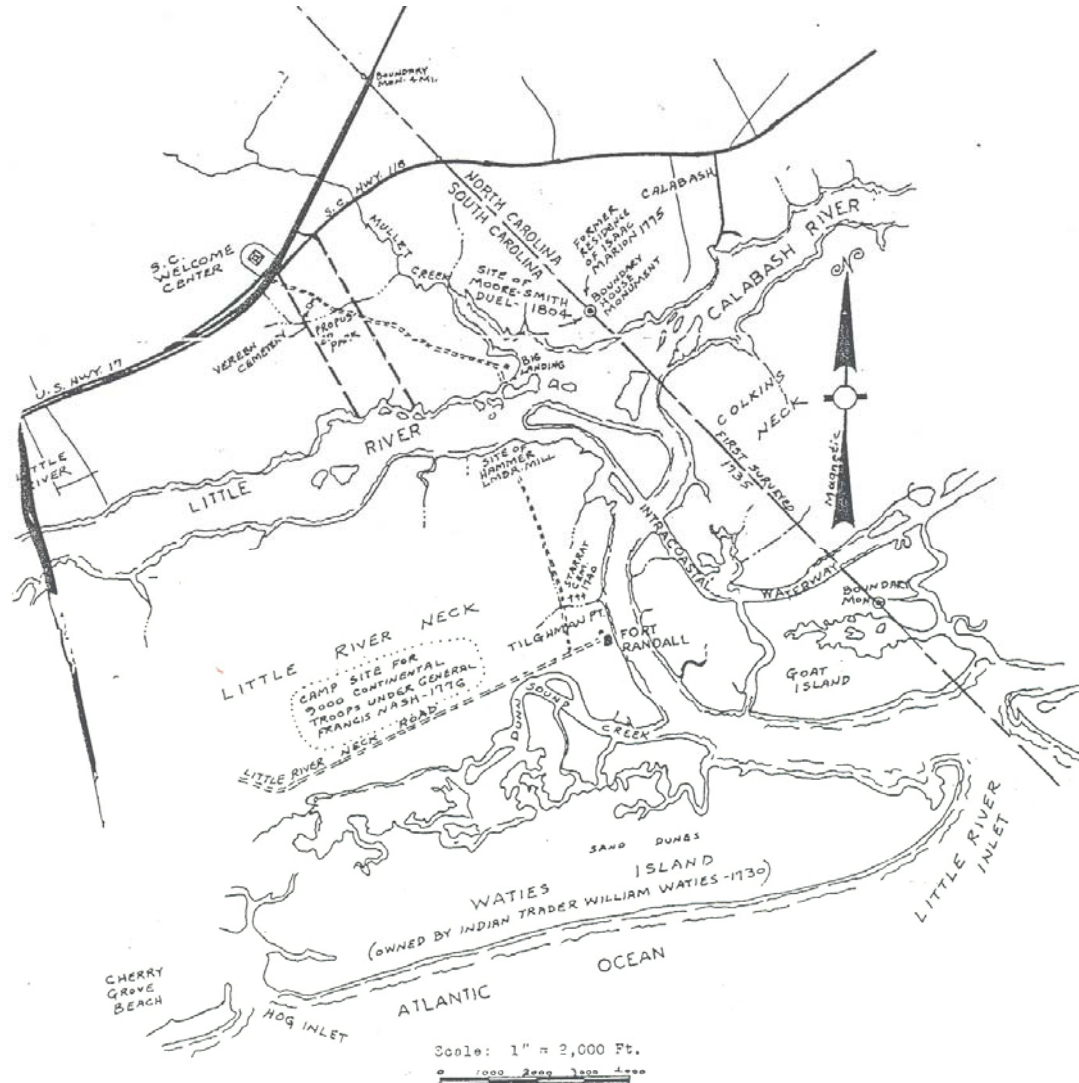




COASTAL CAROLINA  
UNIVERSITY



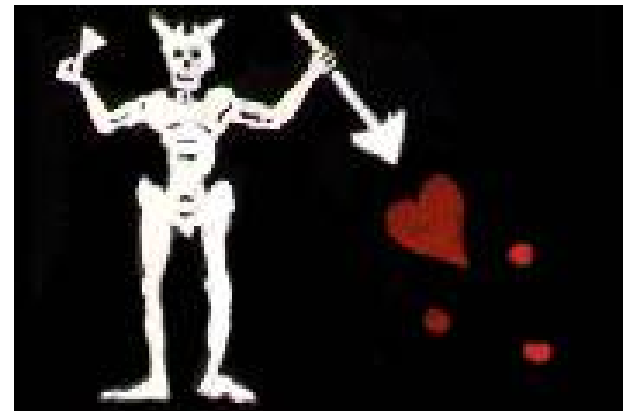
# Map of Little River Neck area showing historical points of interest



# The Village of Little River

**Horry County, SC**

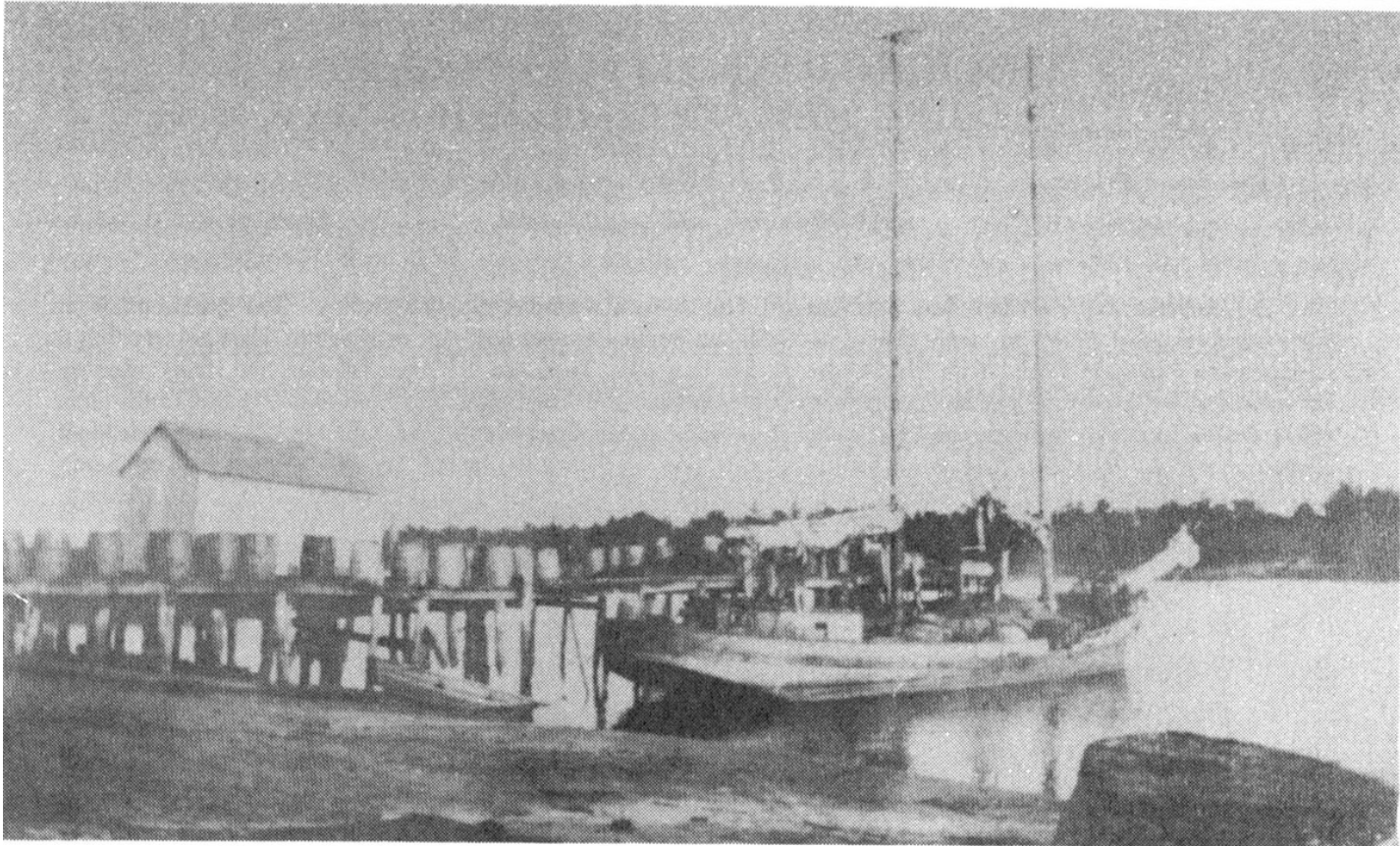
# Edward Teach aka Blackbeard



# Stede Bonnet and John (Calico Jack) Rackham pirate flags



## Village of Little River, SC (ca. 1915)



The Prince lying at dock, just in from Wilmington with supplies for us.



## Live Oak in Little River, SC



## View of Little River from Vereen Memorial Gardens





## Boardwalk at Vereen Memorial Gardens



## Boardwalk at Vereen Memorial Gardens





# Vereen Family Cemetery, Vereen Memorial Gardens



# **Little River Neck**

## **Horry County, SC**

- Comprises the area between Dunn Creek and Little River.
- First called Frink's Neck for early settler Nicholas Frink.
- Site of Starrat, Allston, Bellamy and Randall Plantations
- Site of Fort Randall
- Site of Tilghman Point





# Tilghman House



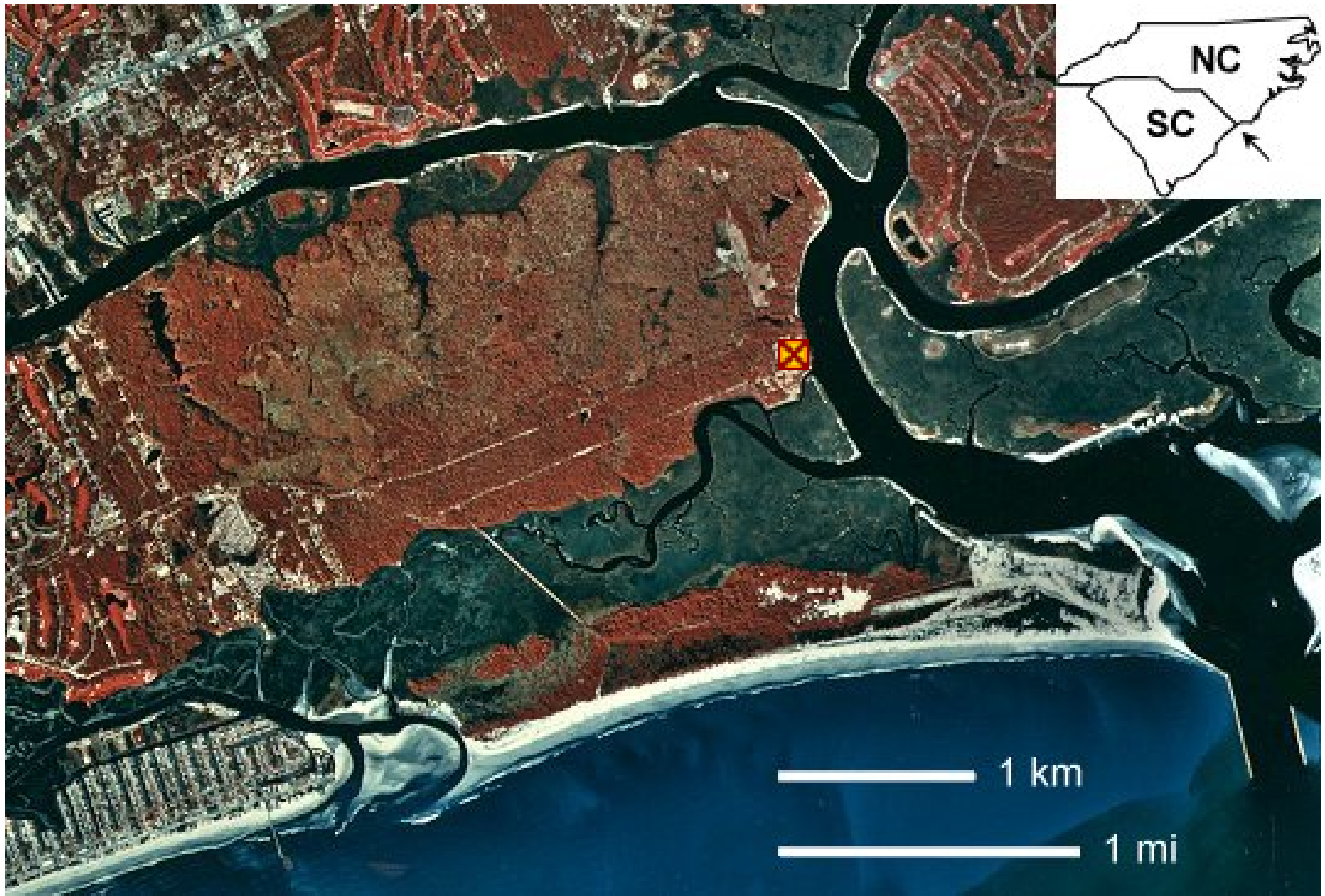


# Tilghman House



# Fort Randall

**Little River Neck, Horry County, SC**





# Site of Fort Randall at Tilghman Point, Little River Neck



## Site of Fort Randall





# Little River looking towards Waties Island from Tilghman Point

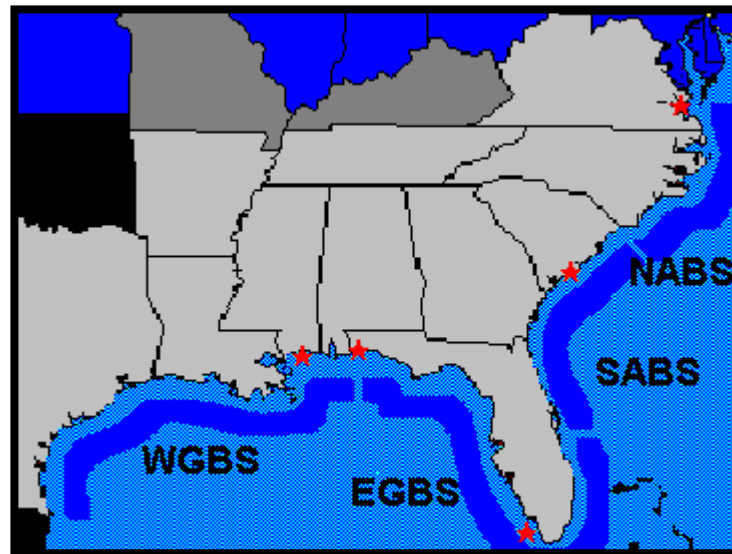




## Damage to Fort Randall site



# North Atlantic Blockading Squadron



# South Atlantic Blockading Squadron

# William Barker Cushing, USN Took part in assault on Fort Randall



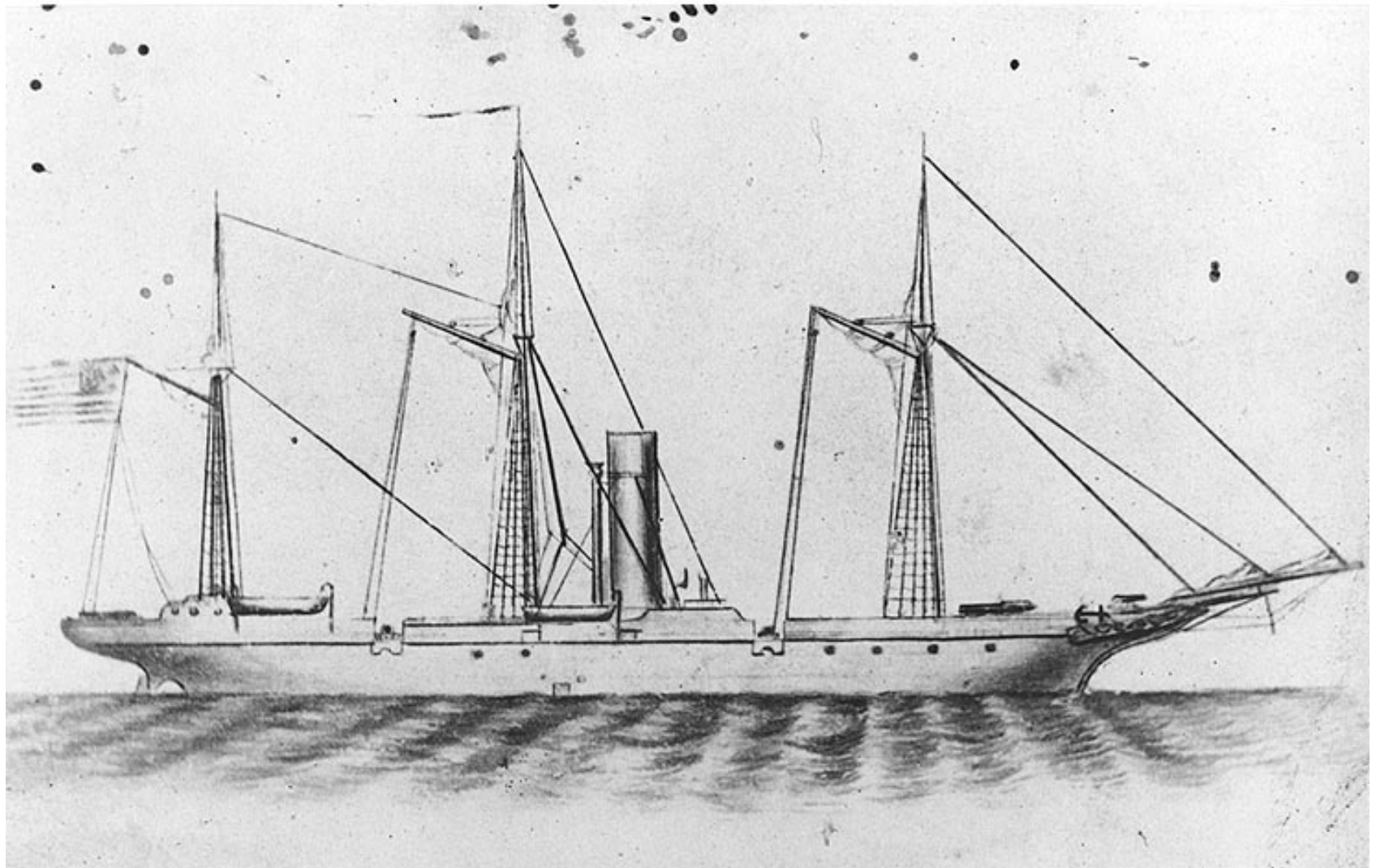
*Culver Service*

William Barker Cushing, when he was about twenty-one years old



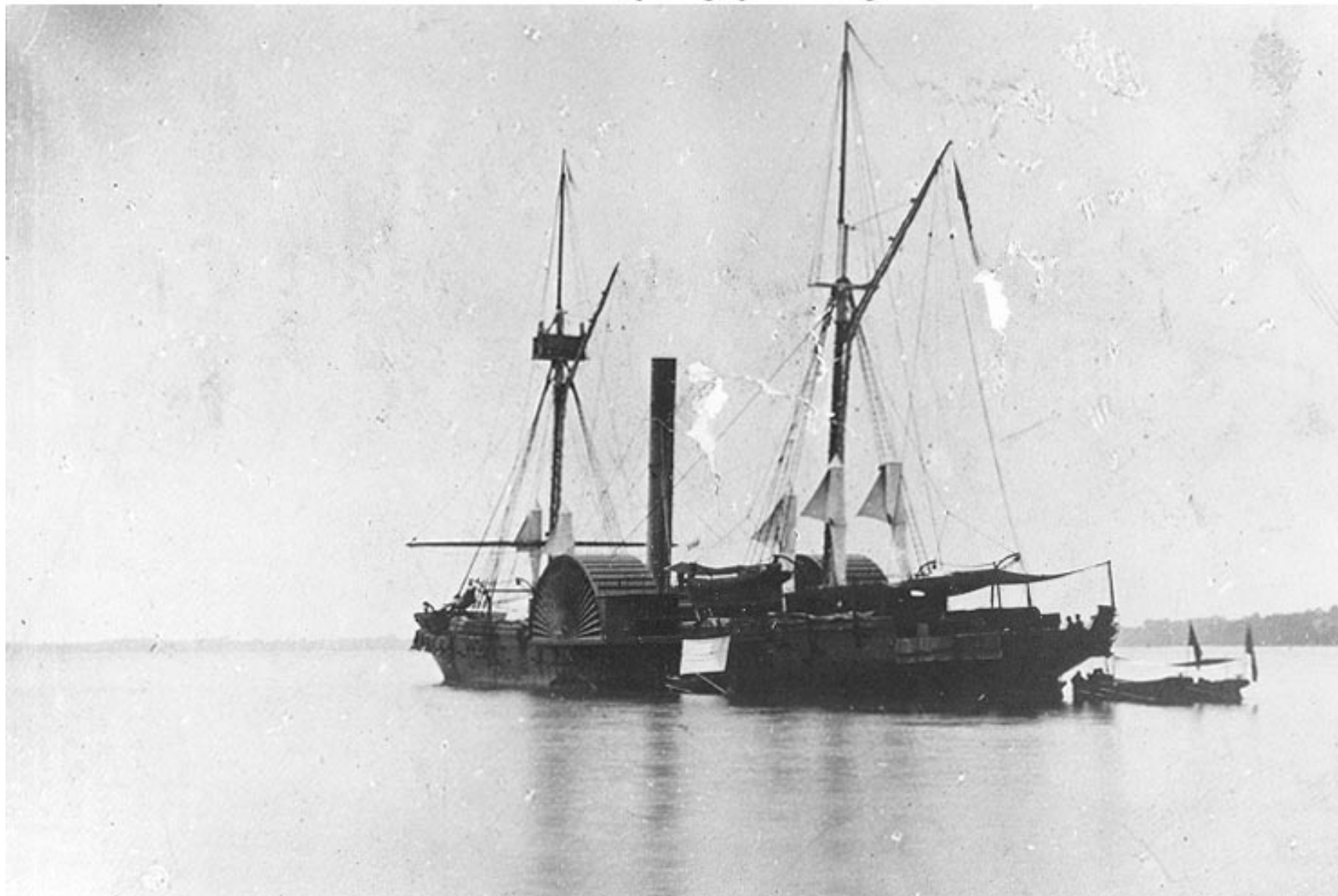
# *USS Aries*

Photo # NH 57272-A USS Aries. Civil War era sketch



# *USS Maratanza*

Photo # NH 46629 USS Maratanza, photographed during the Civil War



## *USS Minnesota*

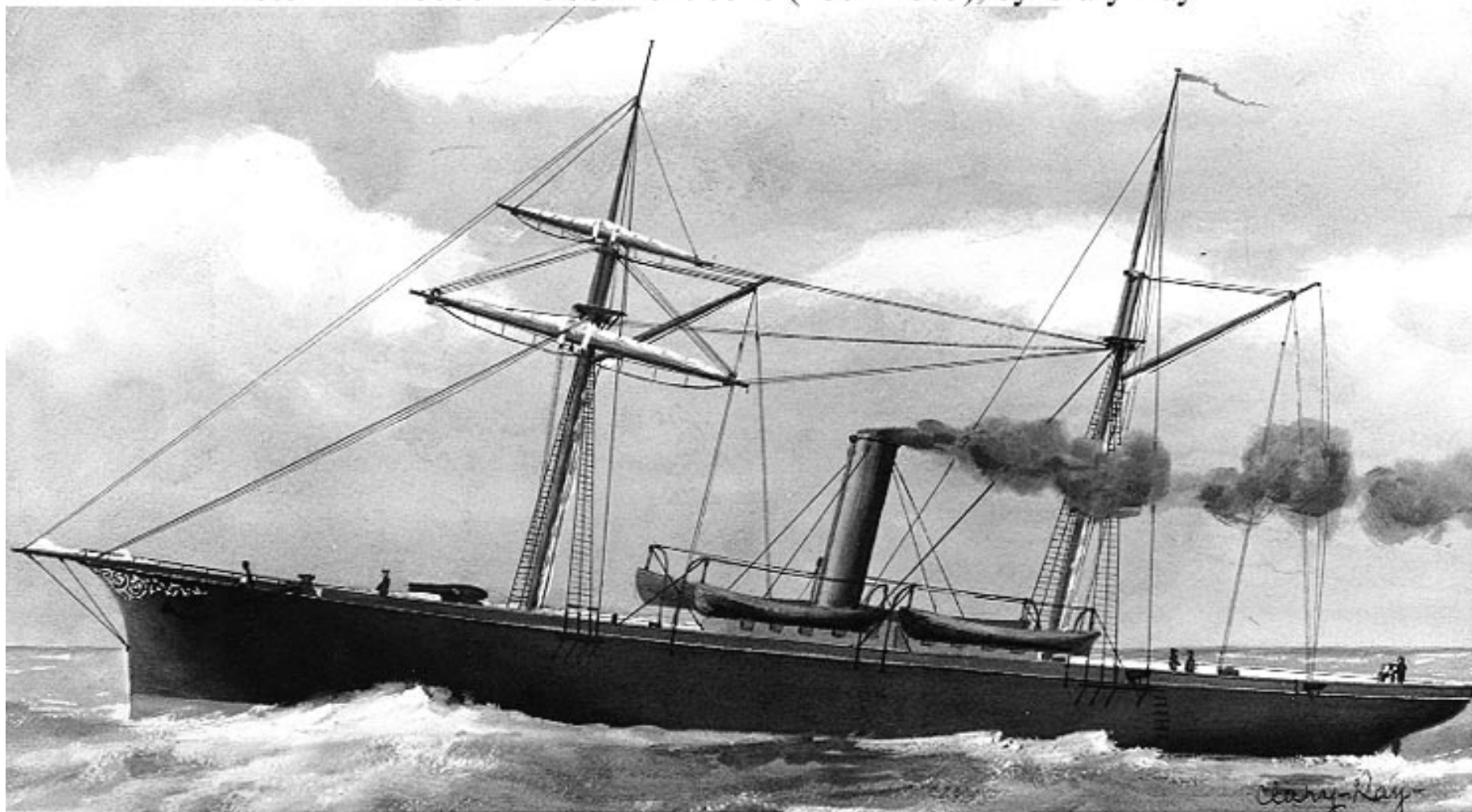


*USS Minnesota*, a frigate, 1861–1901.



# *USS Monticello*

Photo # NH 60661 USS Monticello (1861-1865), by Clary Ray

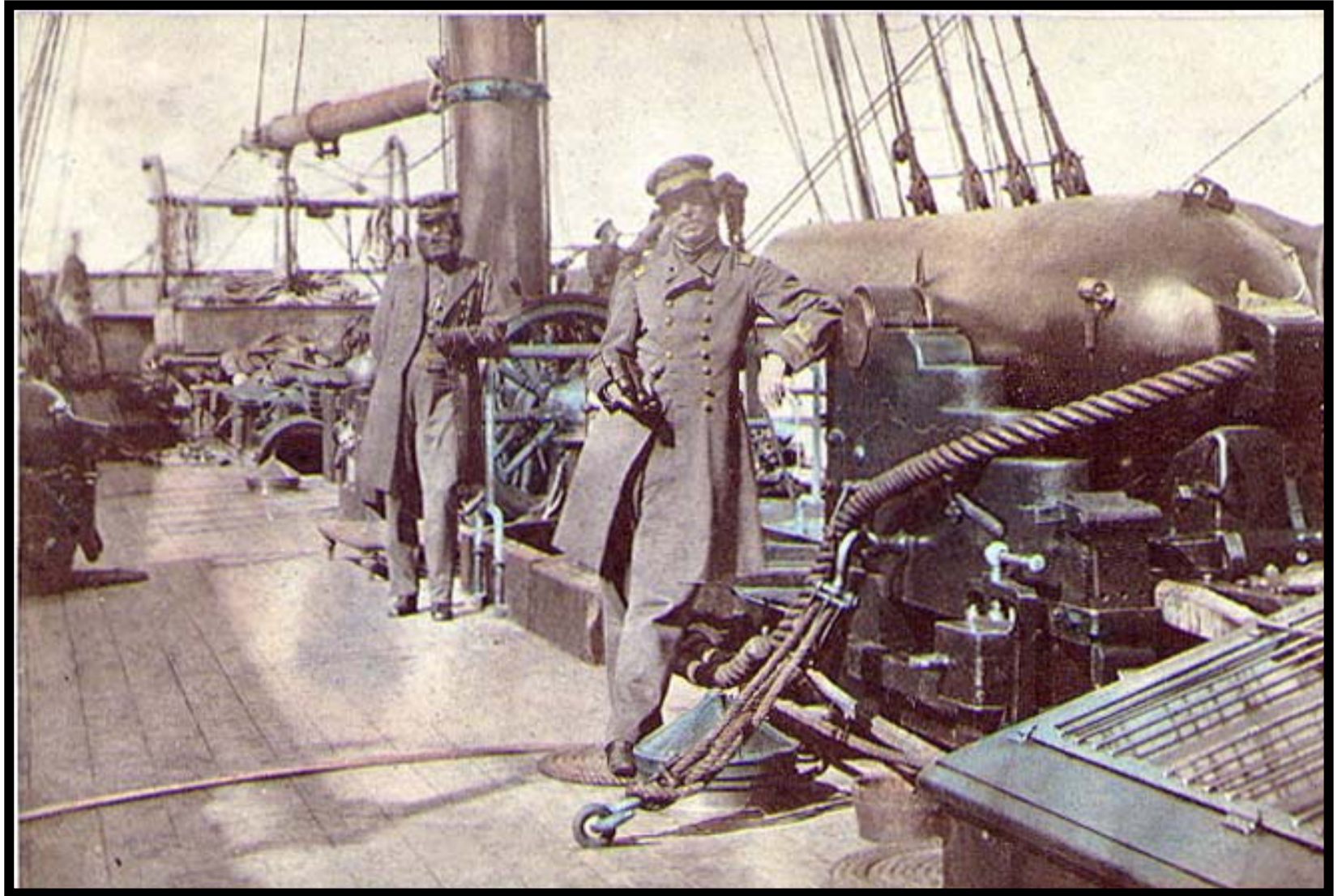


# *CSS Alabama*



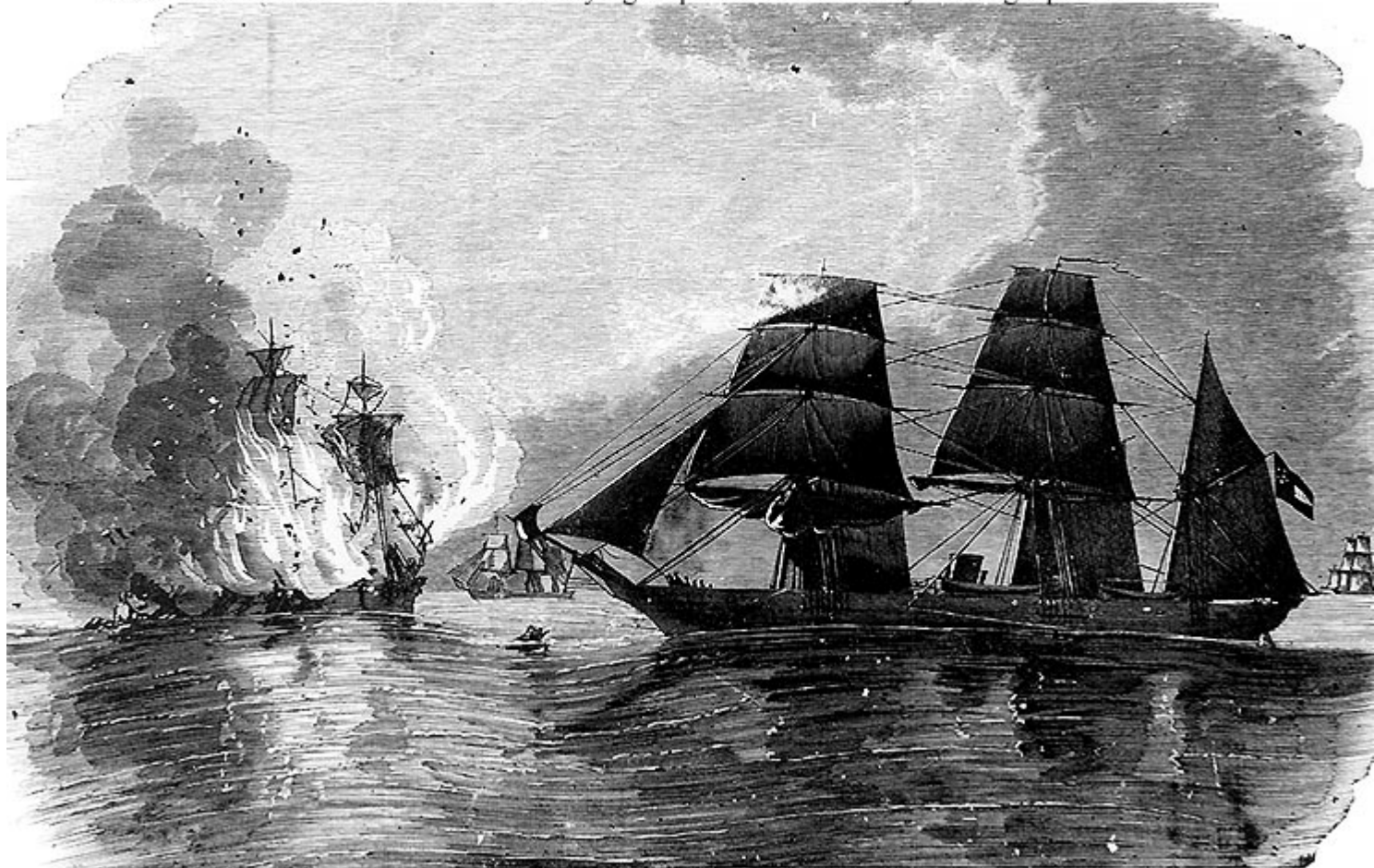


# *CSS Alabama*



# CSS Alabama

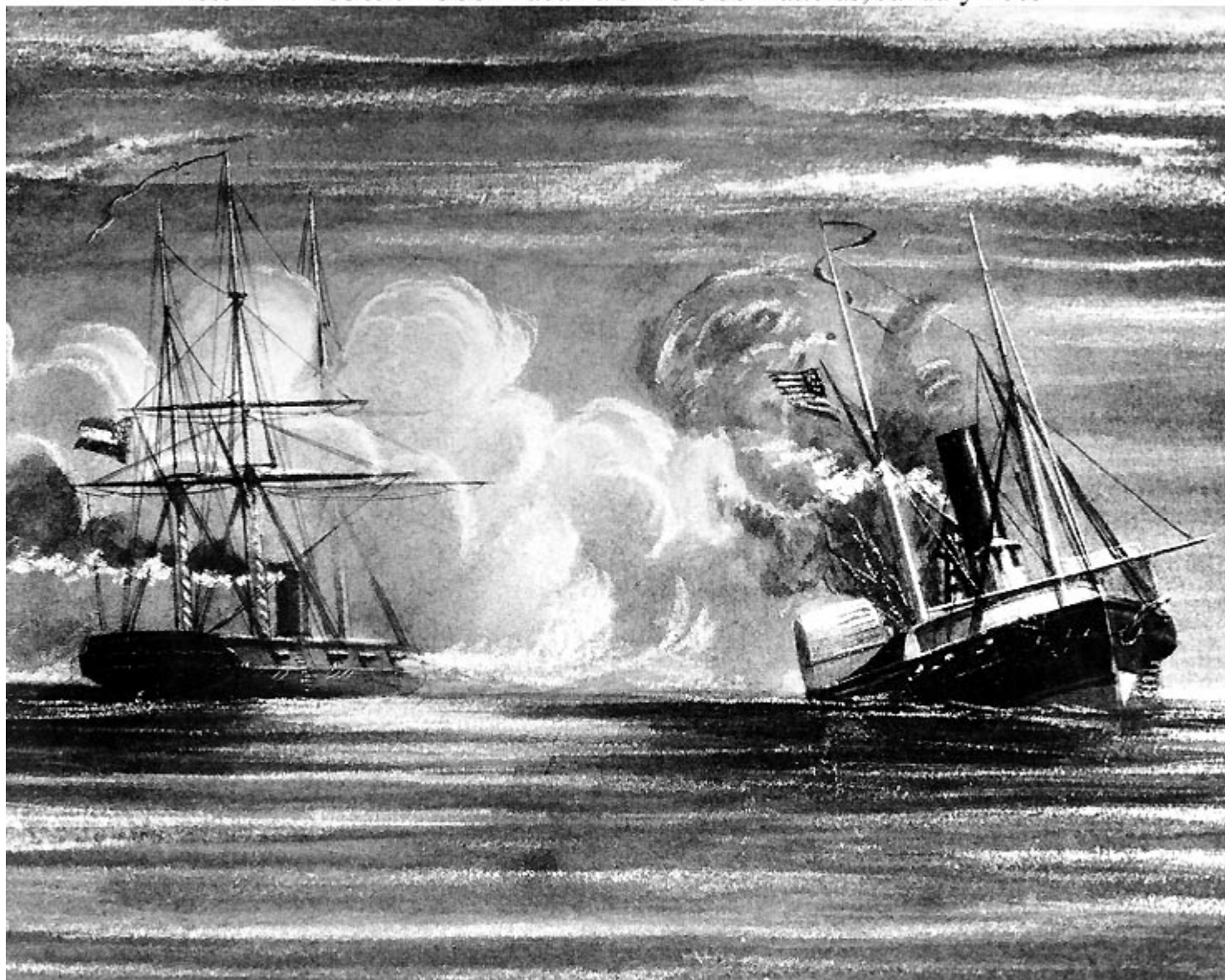
Photo # NH 58739 CSS Alabama decoying ships toward herself by burning a prize vessel





# *CSS Alabama sinks USS Hatteras*

Photo # NH 53690 CSS Alabama sinks USS Hatteras, January 1863



# *USS Kearsarge sinks CSS Alabama*

Photo # K-29827 USS Kearsarge sinks CSS Alabama, 19 June 1864. Painting by Xanthus Smith.





# *USS Hunchback*



Photo # NH 59430 USS Hunchback's crew

# *USS Hunchback*



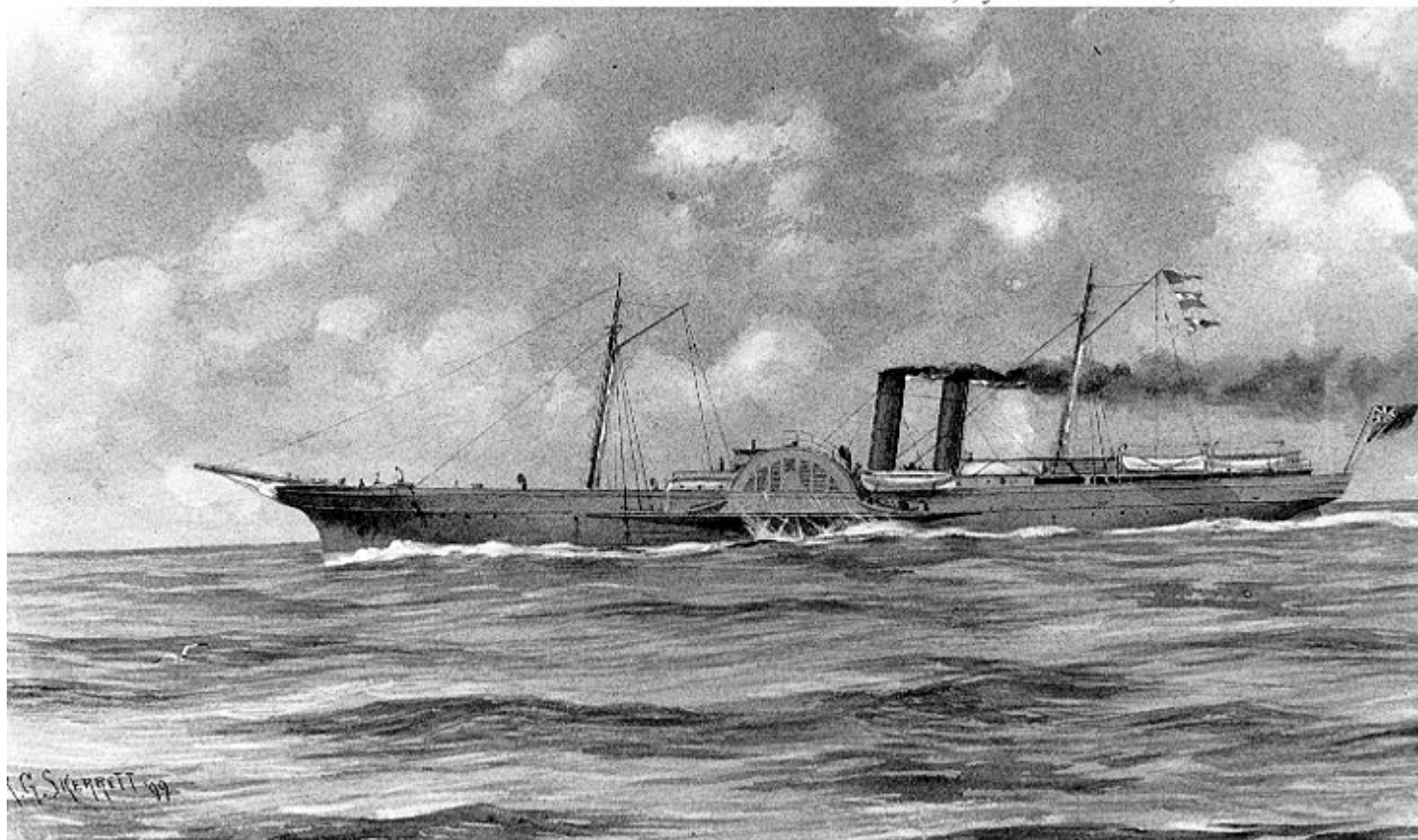
Photo # NH 59430 USS Hunchback's crew





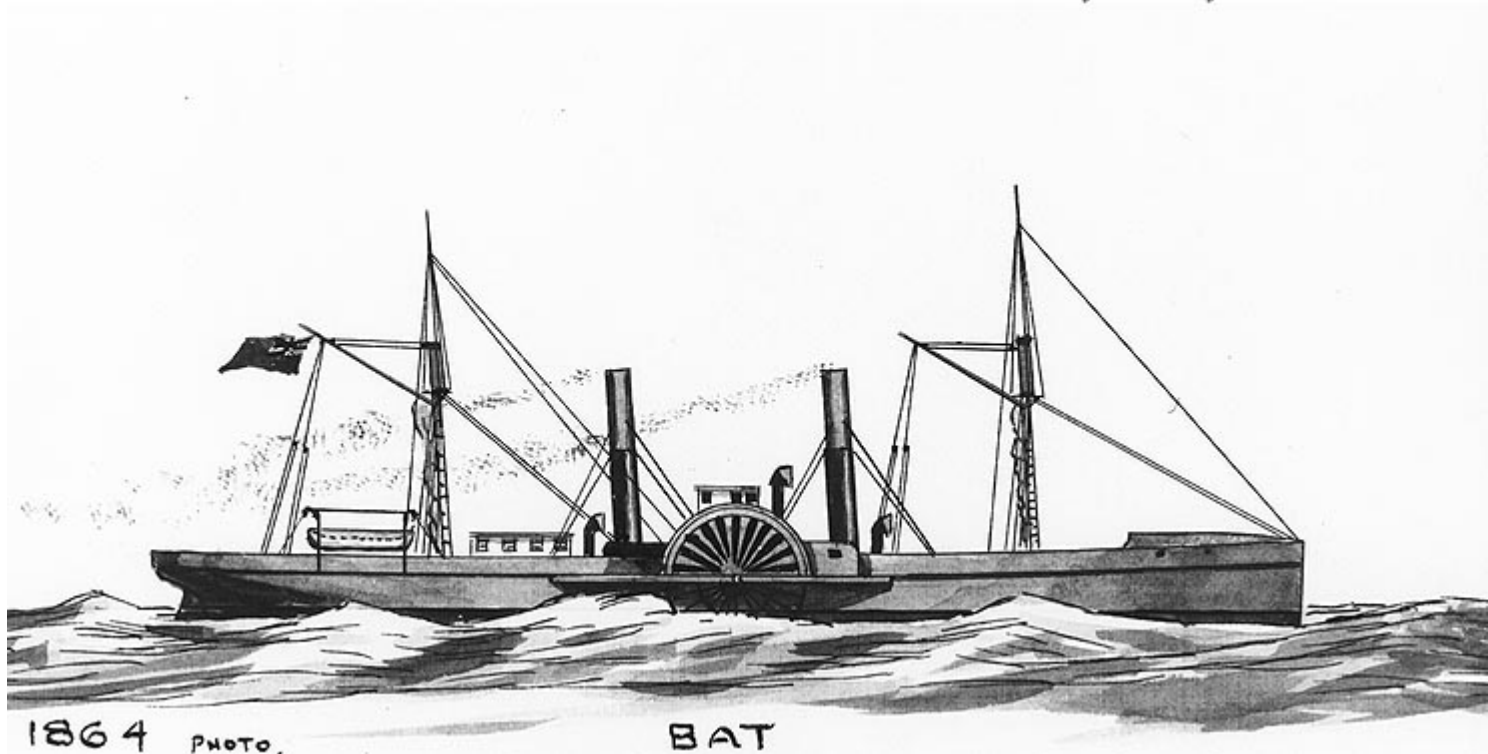
# Confederate Blockade Runner *Advance*

Photo # NH 61882 Confederate blockade runner *Advance*, by R.G. Skerrett, 1899



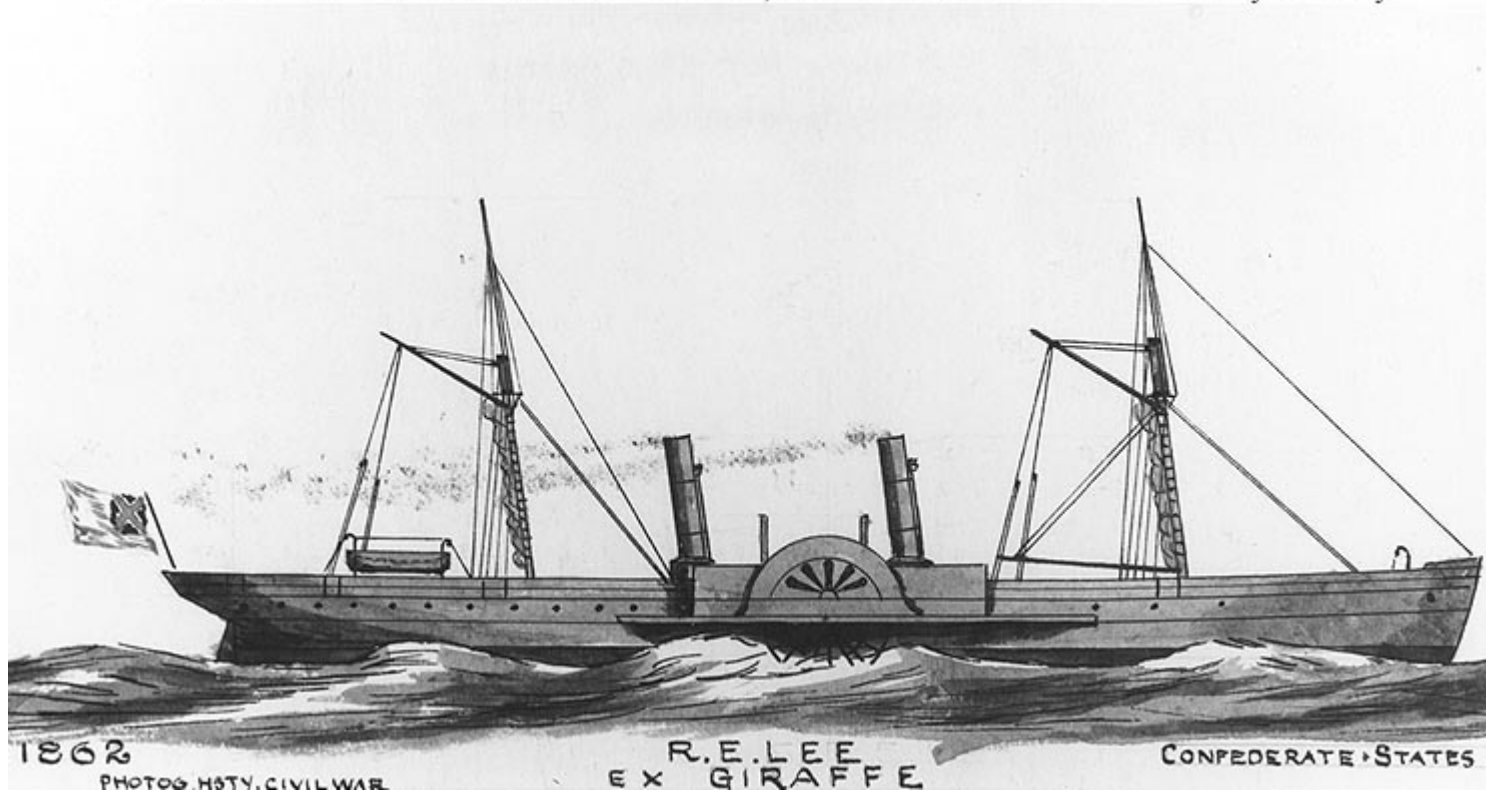
# Confederate Blockade Runner *Bat*

Photo # NH 63846 Civil War blockade runner Bat. Artwork by Erik Heyl



# Confederate Blockade Runner *Robert E. Lee*

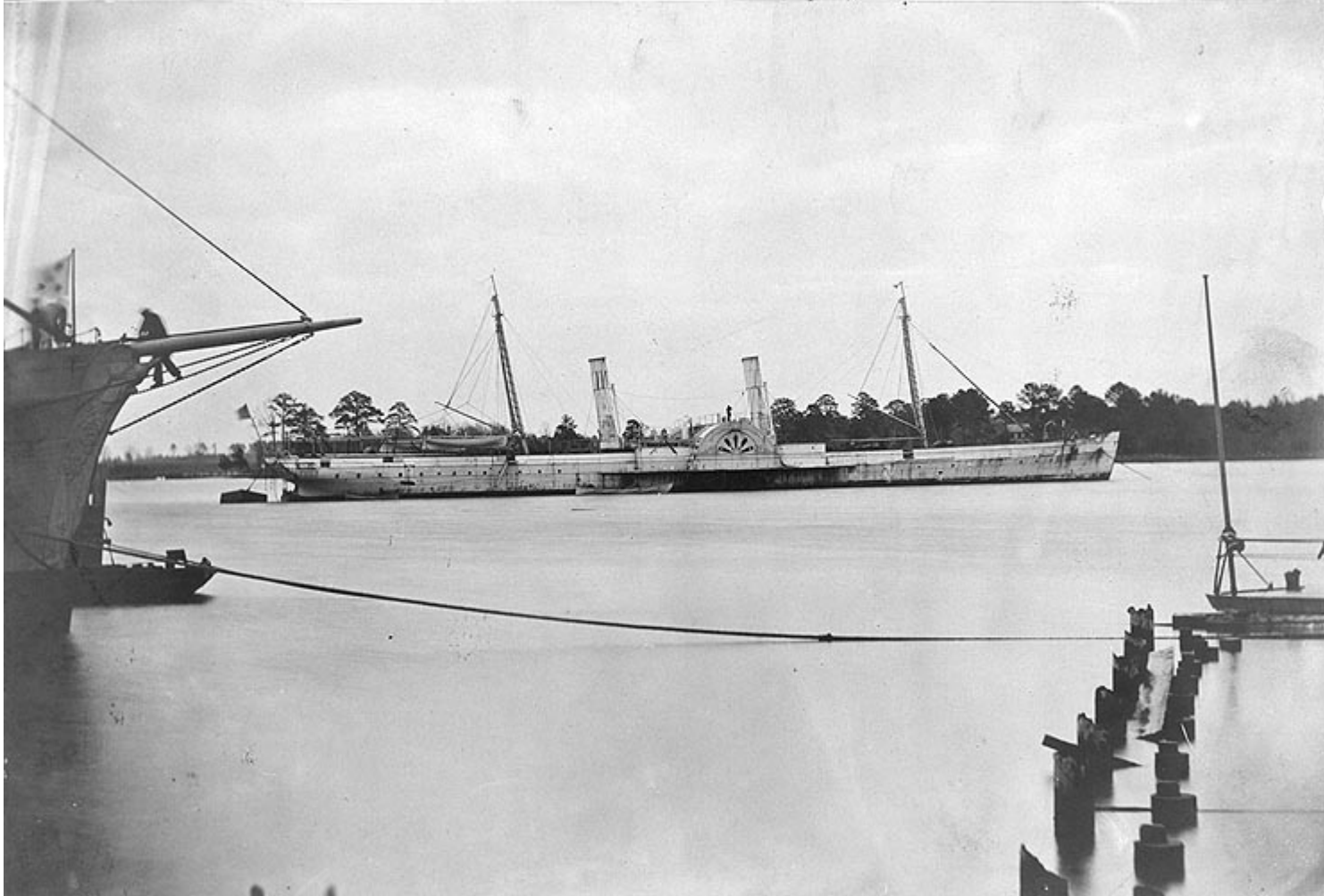
Photo # NH 63888 Blockade runner Robert E. Lee, later USS Fort Donelson. Artwork by Erik Heyl





# Photograph of Confederate Blockade Runner *Robert E. Lee*

Photo # NH 53934 USS Fort Donelson in port, circa 1864-65



# Wreck of blockade runner *Ruby* on Sullivan's Island, SC



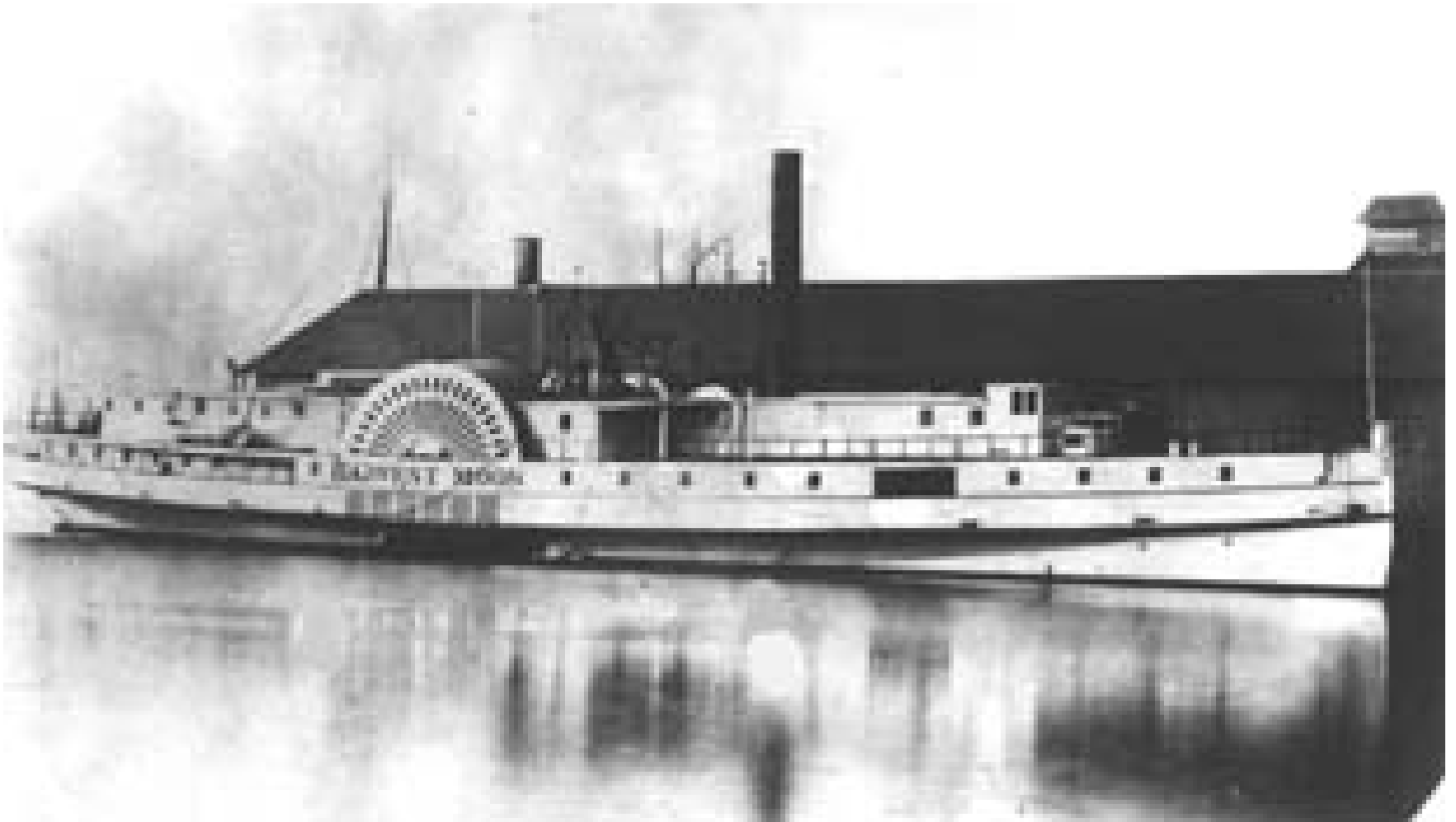
# Ruins of beached blockade runner on Folly Island, SC





Flagship - *USS Harvest Moon*

It was sunk in Winyah Bay



**Waties Island**

**Horry County, SC**





Pee Dee



# Etowah Chief







## View of Dunn Creek at Waties Island



# Looking towards Waties Island from bluff on Little River Neck



# Waties Island

Looking seaward from back of island on the eastern end





Looking eastward along the Beach at Waties Island



# View of East Cherry Grove Beach from western end of Waties Island



APR 5 2005



COASTAL CAROLINA  
UNIVERSITY

THE END

